

Are you interested in learning more about this exciting research project?

We are happy to answer any questions you might have!

Please call us at

212-543-6072

or

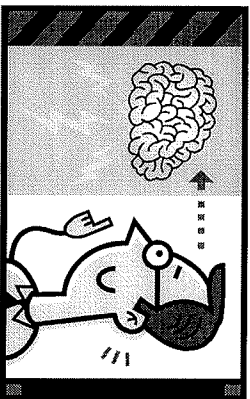
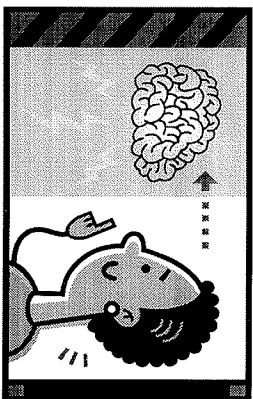
212-543-5299

Or email us at

mristudy@childpsych.columbia.edu

du

**Principal Investigator:
Bradley Peterson, MD**



NYSP-IRB	
OK for Recruitment	
Date	IRB#
3/18/09 - 9/10/09	5321R

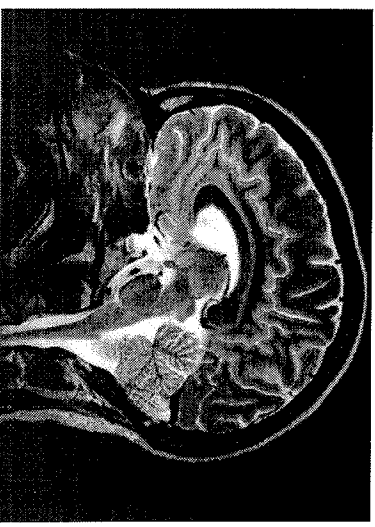
MRI Research Study

On

Gender Identity

at the

**New York State
Psychiatric Institute
1051 Riverside Drive, Unit 74
New York, NY 10032
(212)543-6072**



What is an MRI?

- **MRI** stands for **Magnetic Resonance Imaging**.
- MRI uses magnetic waves and radio waves to take pictures.
- A computer interprets the radio waves from the MRI scanner and creates a picture of the soft tissue in the part of the body that was scanned. In this research we are interested in taking pictures of the brain.
- MRI pictures can be taken and looked at in different ways. The scanner takes snapshots of the brain to help researchers figure out what different parts of the brain do, how different parts of the brain are connected, and much more.
- There is no radiation and no surgery. Since it is done without using any radiation exposure at all, MRI is thought to be a safe way to do research.

Why are we inviting people to have an MRI?

have an MRI?

Through the help of research volunteers, we are hoping to learn more about the brain and where, in part, gender identity comes from. We are inviting people ages 6-20 years who show variation in gender identity, or who have been diagnosed with Gender Identity Disorder, as well as people with a typical gender presentation, to participate.

How will the MRI be done?

The MRI unit is located at the New York State Psychiatric Institute in upper Manhattan. Those who receive MRIs lie on a padded table that slides into a doughnut-shaped magnet. Being inside the scanner is unlikely to cause discomfort, but it can be a bit noisy while it is taking the pictures. We give out earplugs to help lessen the noise, but the earplugs do not stop people inside the machine from being able to hear us talk to them. Many people fall asleep during the MRI.

If I choose to participate, what will I be asked to do?

The MRI Study contains 3 parts: the MRI scan, which takes about 1 1/2

hours; a set of games and puzzles which take about 2 hours; and a set of questions that we ask of both parents and kids about medical history, thoughts, and emotions, which takes about 2 hours.

How will the MRI information and my answers to the questions and puzzles be used?

We use MRI for research purposes, so we will not be learning anything specific about any one person by looking at his/her MRI scan. However, when we put together MRI information from a large number of children within this study, we hope to learn how areas within the brain *in general* are related to mental health. The information we gather in this research project will help us to learn what still needs to be studied when it comes to brain structure and function.

Will I receive anything as a thank-you for participating?

Children 11 and younger receive a gift certificate to Toys R US, and children 12 and older receive a check, worth \$120, as a thank-you for participating in the MRI study.

NYSP-IRB	
OK for Recruitment	
Date	2/16/09 . 9/10/09
IRB#	5321P